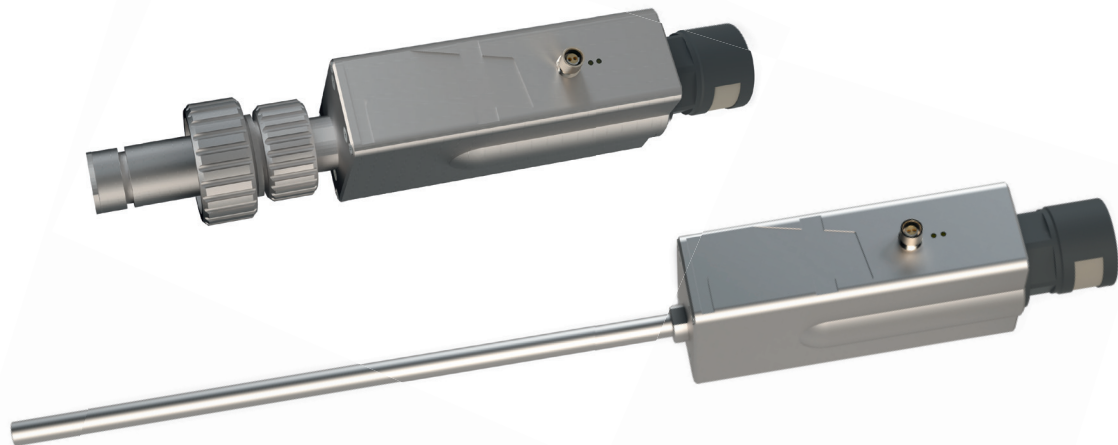


Technical Data Sheet

PROGAZE41 – Raman Immersible Probe

PROGAZE®



The Raman immersible probe PROGAZE41 is a fiber-coupled probe for Raman spectroscopic measurements directly in the process. Its high sensitivity assures a reliable and fast data acquisition even under demanding operational conditions. Continuous monitoring of media, for example in reactors or pipelines, are typical applications for this probe.

Utilizing SMA 905 fiber optic connectors, the PROGAZE41 probe can be easily connected and operated with all standard Raman spectrometer systems. The integrated interlock supports the implementation of laser safety features.

For convenient process adaptation, a variety of standard flanges is available. Dedicated sensor interface adapters enable the replacement of the probe or to change the measuring position even under sterile conditions.

PROGAZE41 – Raman Immersible Probe

Technical Data

PROGAZE®

Spectroscopic Method	Raman
Measurement Type	Scattering
Sampling Type	Immersion
Excitation Wavelength	785 nm
Wavelength Range	150 - 3500 cm ⁻¹
Working Distance (Range)	Variable (typical: 0 - 2 mm)
Materials	Housing: 1.4301 Sample-Contacting Parts: • Probe Body Material: 316 L Low Carbon Steel • Window: Sapphire • Window Sealing: GTMS
Operating Temperature	Sample Temperature: 5 - 180 °C Ambient Temperature: 5 - 80 °C
Storage Temperature	0 - 80 °C
Relative Humidity	0-95%, non-condensing
Operating Pressure (Range)	max. 10 bar
Mechanical Connector Type	PG 13.5, Ingold G 1 ¼ inch
Immersion Depth	PG 13.5: 227 mm Ingold G 1 ¼ inch: 41 mm
Fiber Connector Type	Excitation: FC-APC Detection: F-SMA 905
Dimensions (W x H x D)	PG 13.5: Approx. 74 mm x 462 mm x 50 mm Ingold G 1 ¼ inch: Approx. 74 mm x 277 mm x 50 mm
Weight	PG 13.5: Approx. 1.6 kg Ingold G 1 ¼ inch: Approx. 1.9 kg
Compliance	Laser Safety

tec5_DS_Products_PROGAZE41_Raman_Immersible_Probe_V1_en